

Wesco Distiller Settings

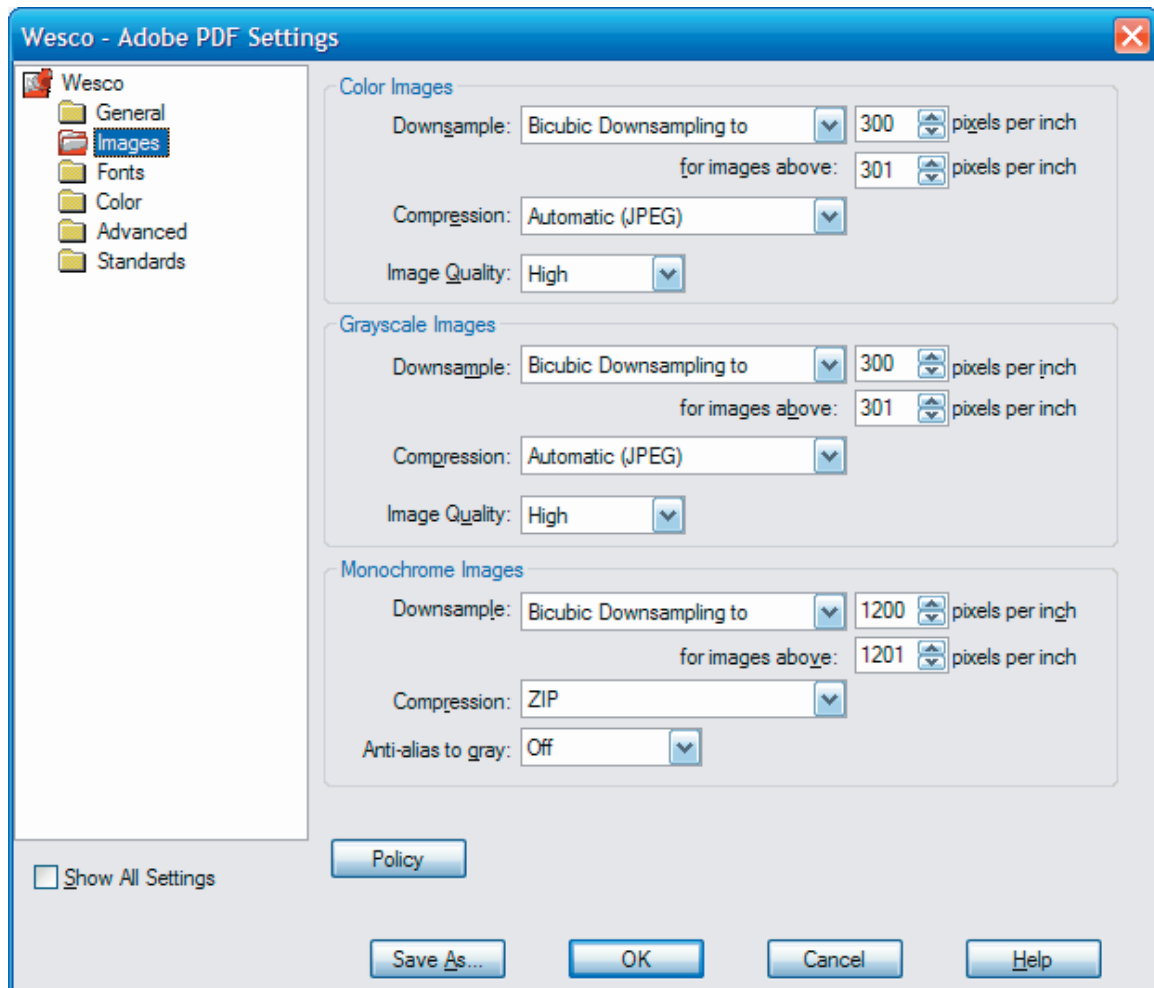
GENERAL

The image shows a screenshot of the 'Wescojoboptions - Adobe PDF Settings' dialog box, specifically the 'GENERAL' tab. The dialog has a blue title bar with a close button (X) in the top right corner. On the left side, there is a tree view showing the following folders: Wescojoboptions, General, Images, Fonts, Color, Advanced, and Standards. The 'General' folder is selected. Below the tree view is a checkbox labeled 'Show All Settings'. The main area of the dialog is divided into several sections:

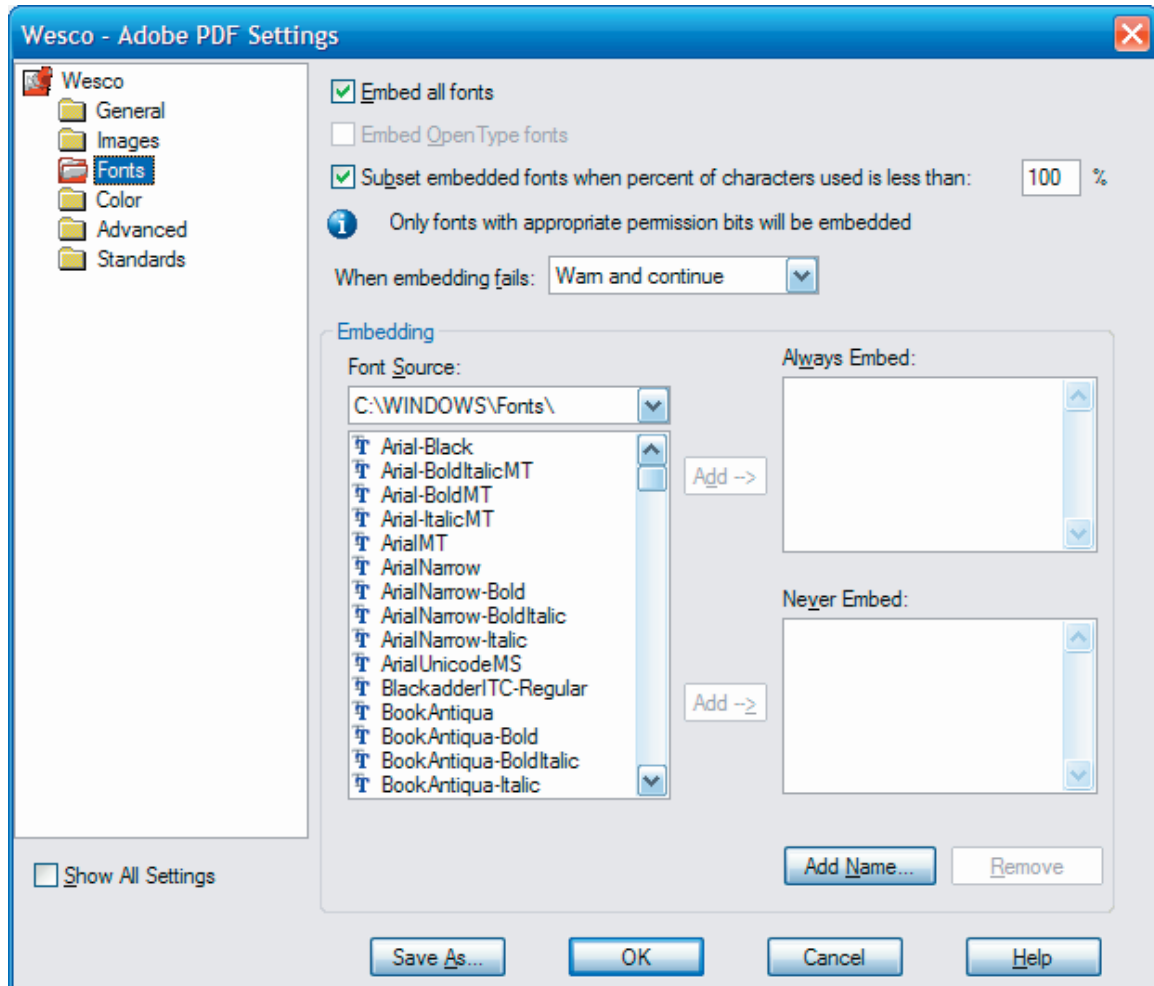
- Description:** A text box containing the text: 'Use these settings to create Adobe PDF documents best suited for high-quality prepress printing. Created PDF documents can be opened with Acrobat and Adobe Reader 5.0 and later.'
- File Options:** A section containing several settings:
 - Compatibility: Acrobat 4.0 (PDF 1.3) (dropdown menu)
 - Object Level Compression: Tags only (dropdown menu)
 - Auto-Rotate Pages: Off (dropdown menu)
 - Binding: Left (dropdown menu)
 - Resolution: 2400 dots per inch (text input)
 - Radio buttons for page selection: 'All Pages' is selected, 'Pages From: [] To: []' is unselected.
 - Checkbox for 'Embed thumbnails' is unselected.
 - Checkbox for 'Optimize for fast web view' is checked.
- Default Page Size:** A section containing:
 - Width: 8.75 (text input)
 - Units: Inches (dropdown menu)
 - Height: 11.0 (text input)

At the bottom of the dialog, there are four buttons: 'Save As...', 'OK', 'Cancel', and 'Help'.

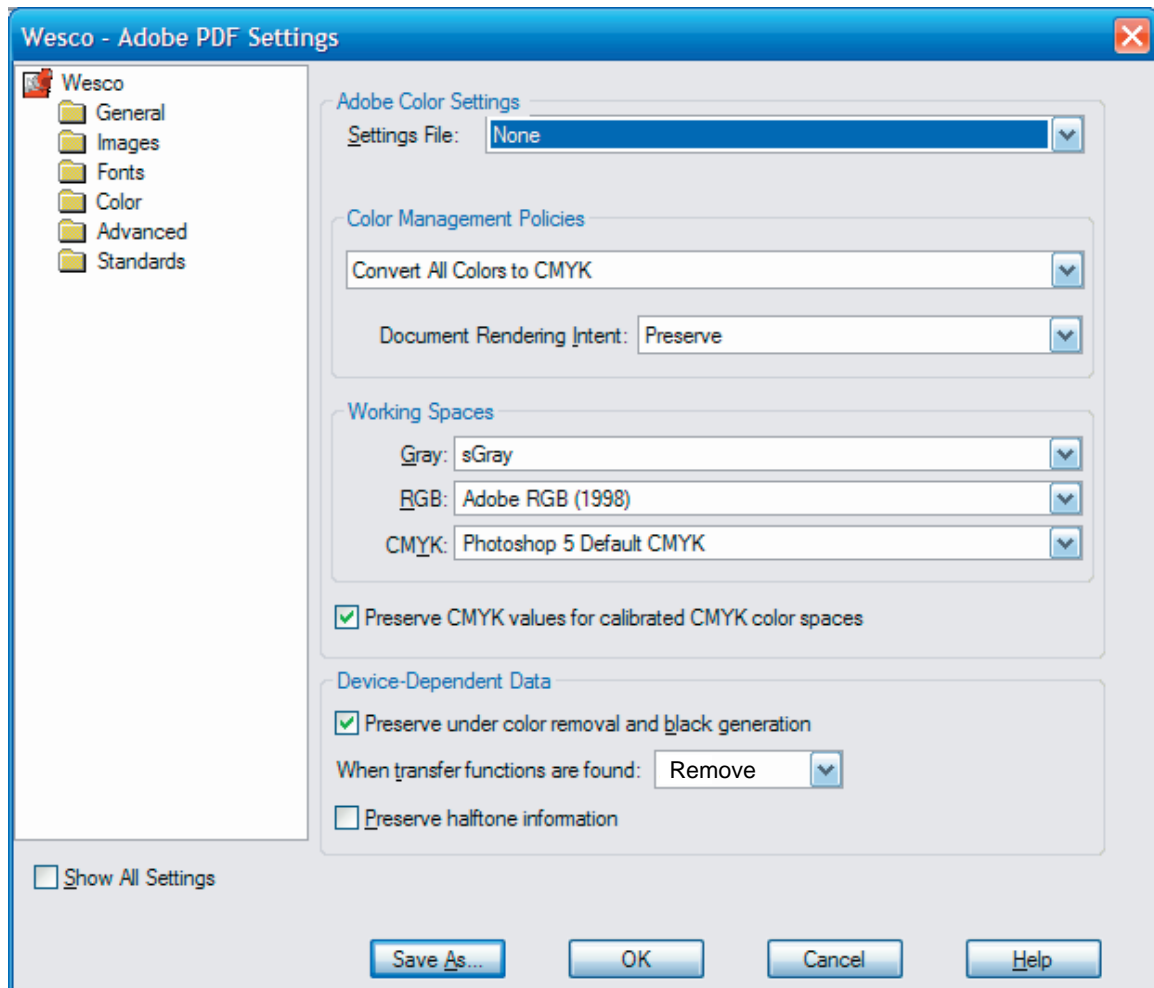
IMAGES



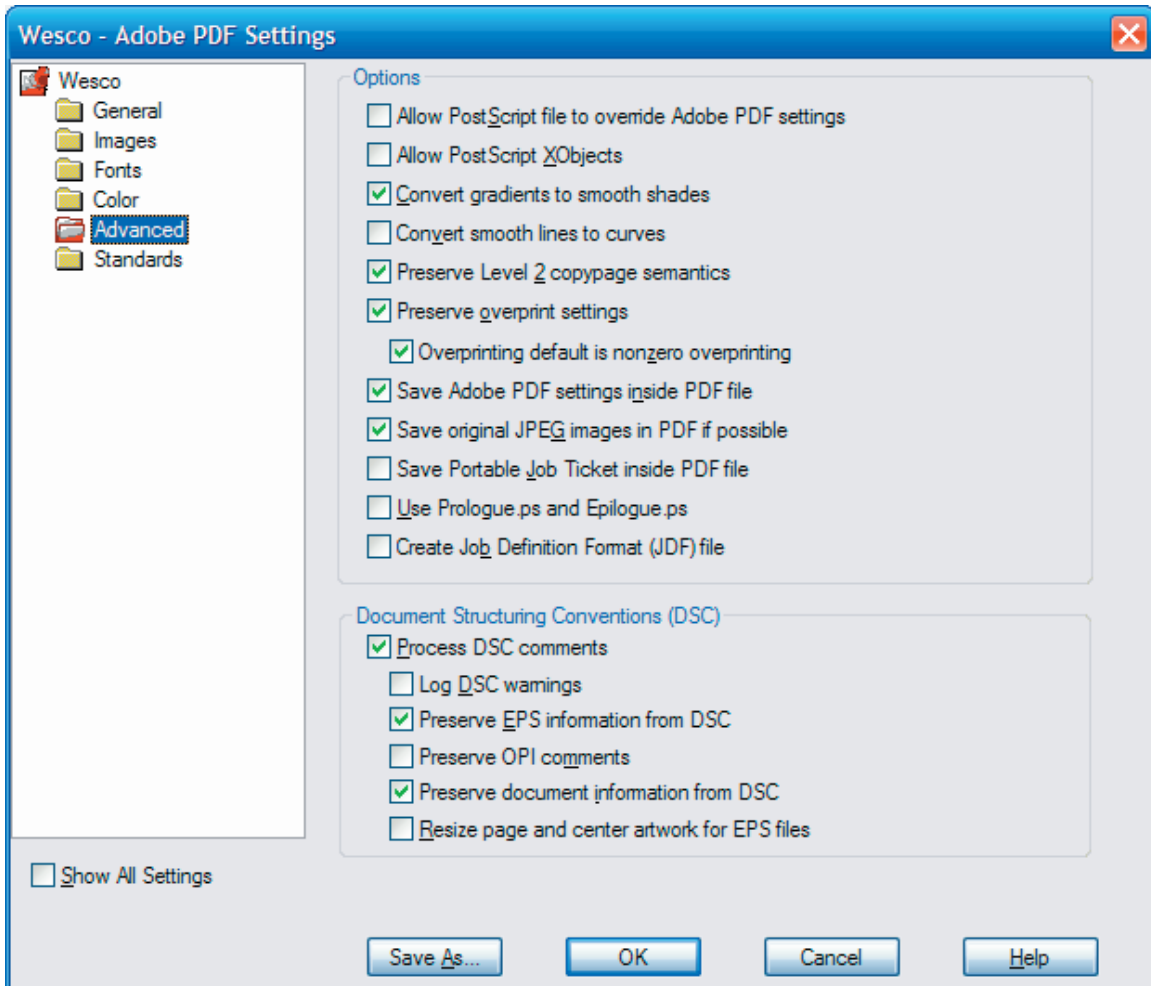
FONTS



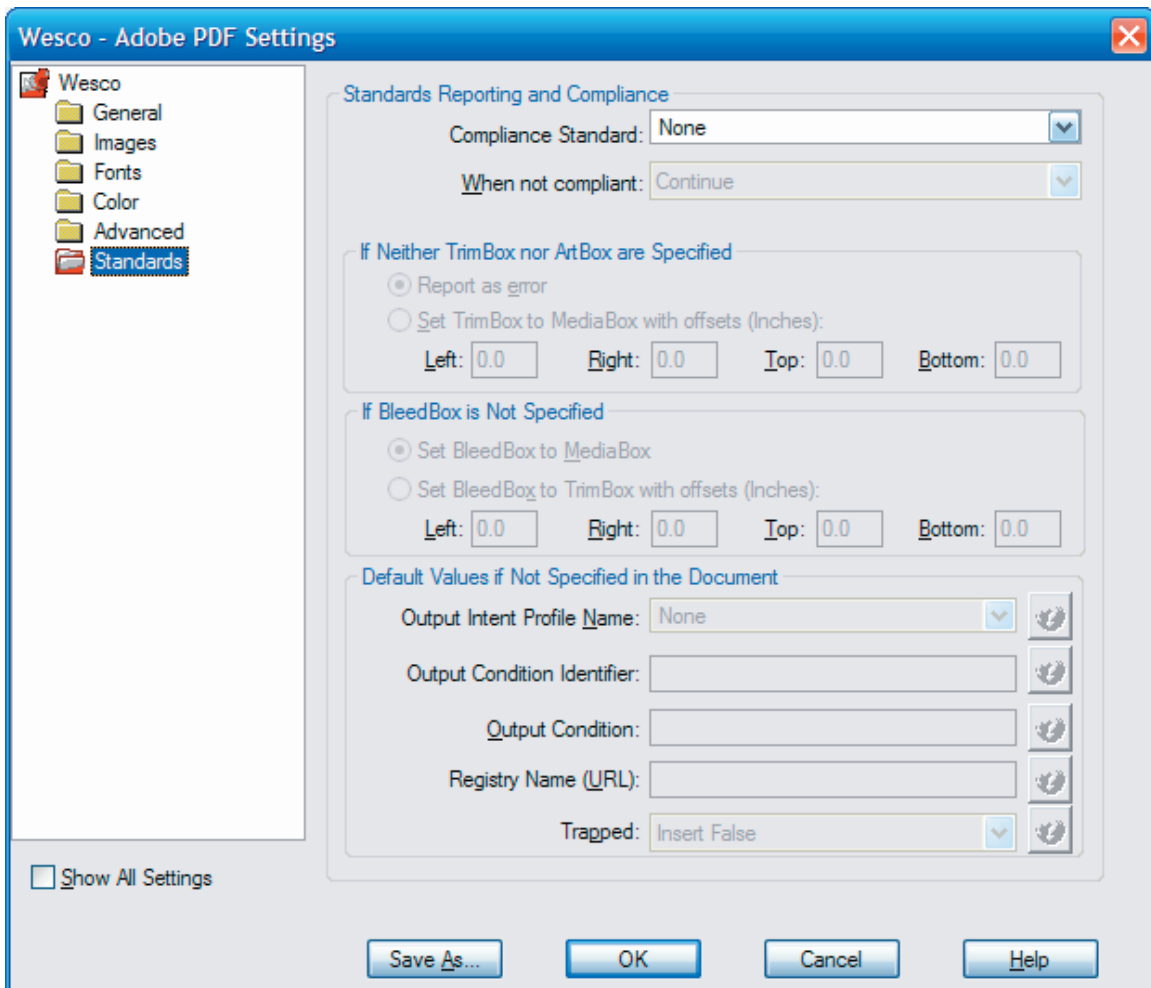
COLOR



ADVANCED



STANDARDS



-end-